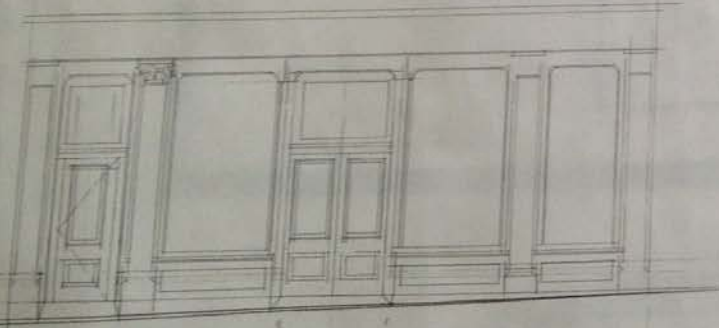
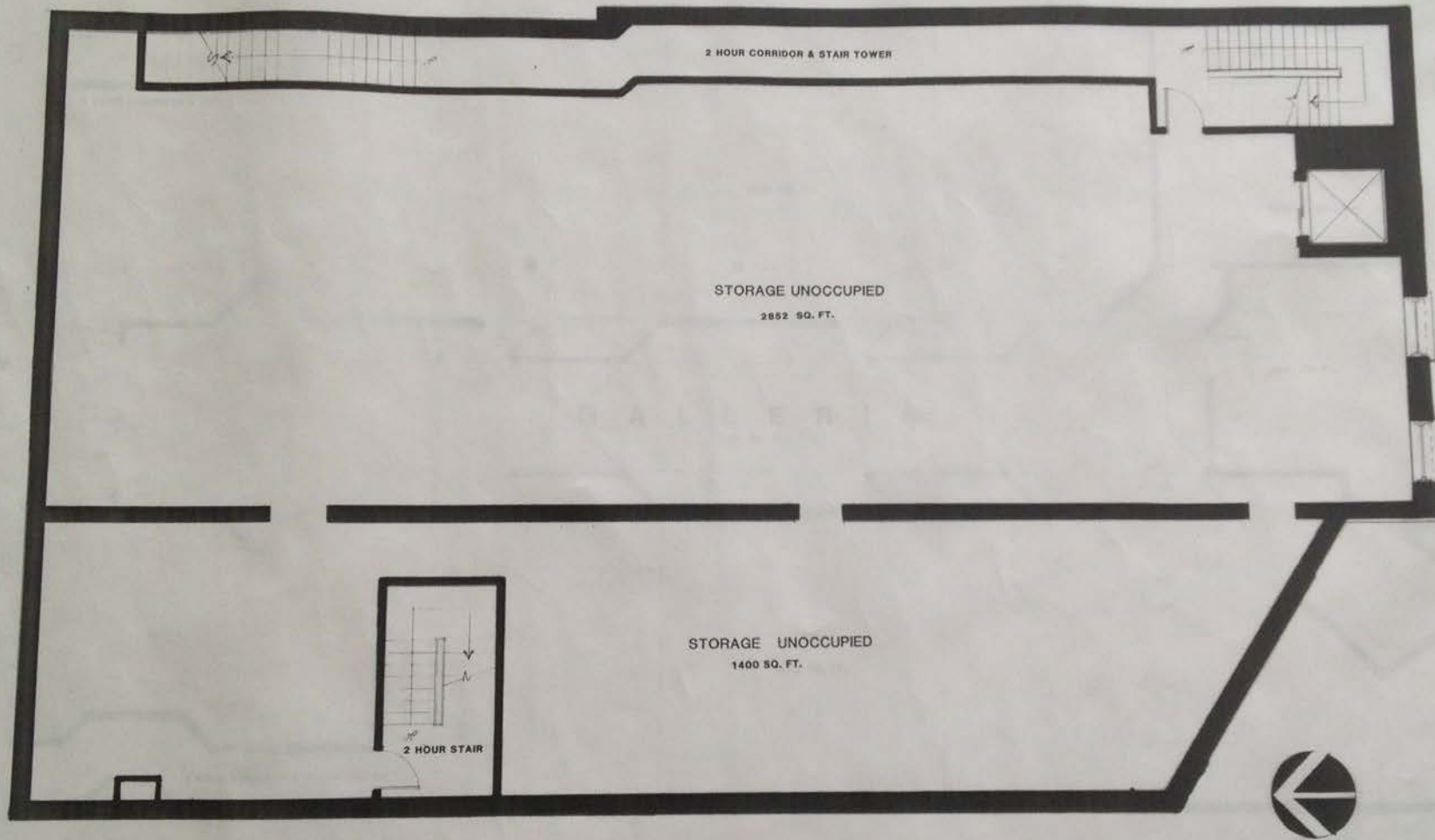


INTERDE
L I M I

PC 1000 2
OLD L'VEL 17
203 454 0000 00



PRINT



BASEMENT PLAN

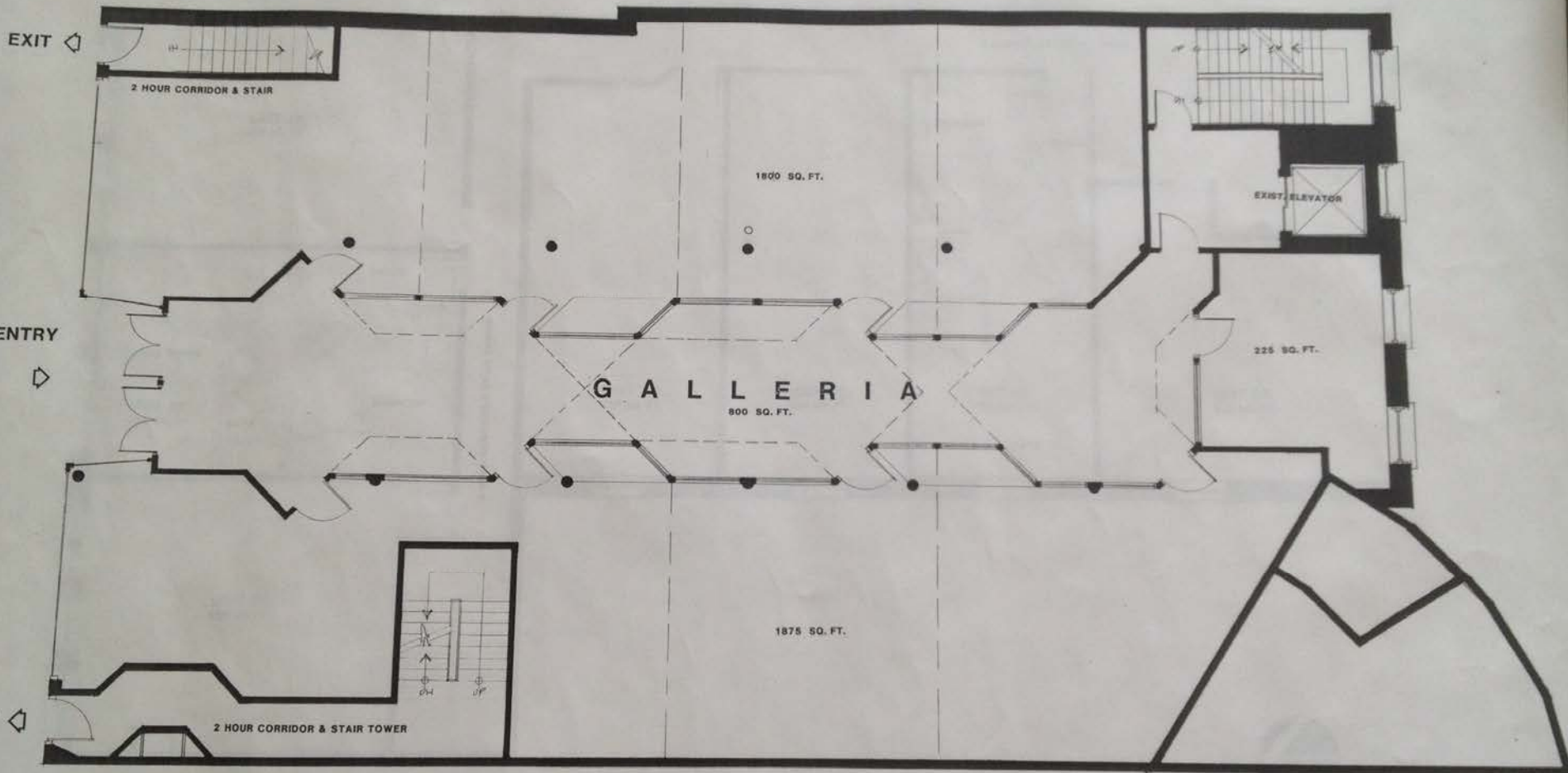
1
SD 2

INTERDESIGN
 Old Lyme, Connecticut 06371
 203 434-8083



REID AND HUGHES BLDG.
 PROPOSED REDEVELOPMENT FOR CANDLEWOOD DEVELOPMENT CO.
 MAIN ST., NORWICH, CT.

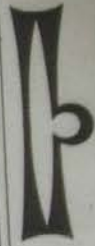
DATE: 11/10/83
 SCALE: 1/8" = 1'-0"
 DRAWN: SD-2
 CHECK: SD-2
 SD-



1 PLAN-FIRST FLOOR
SD 3

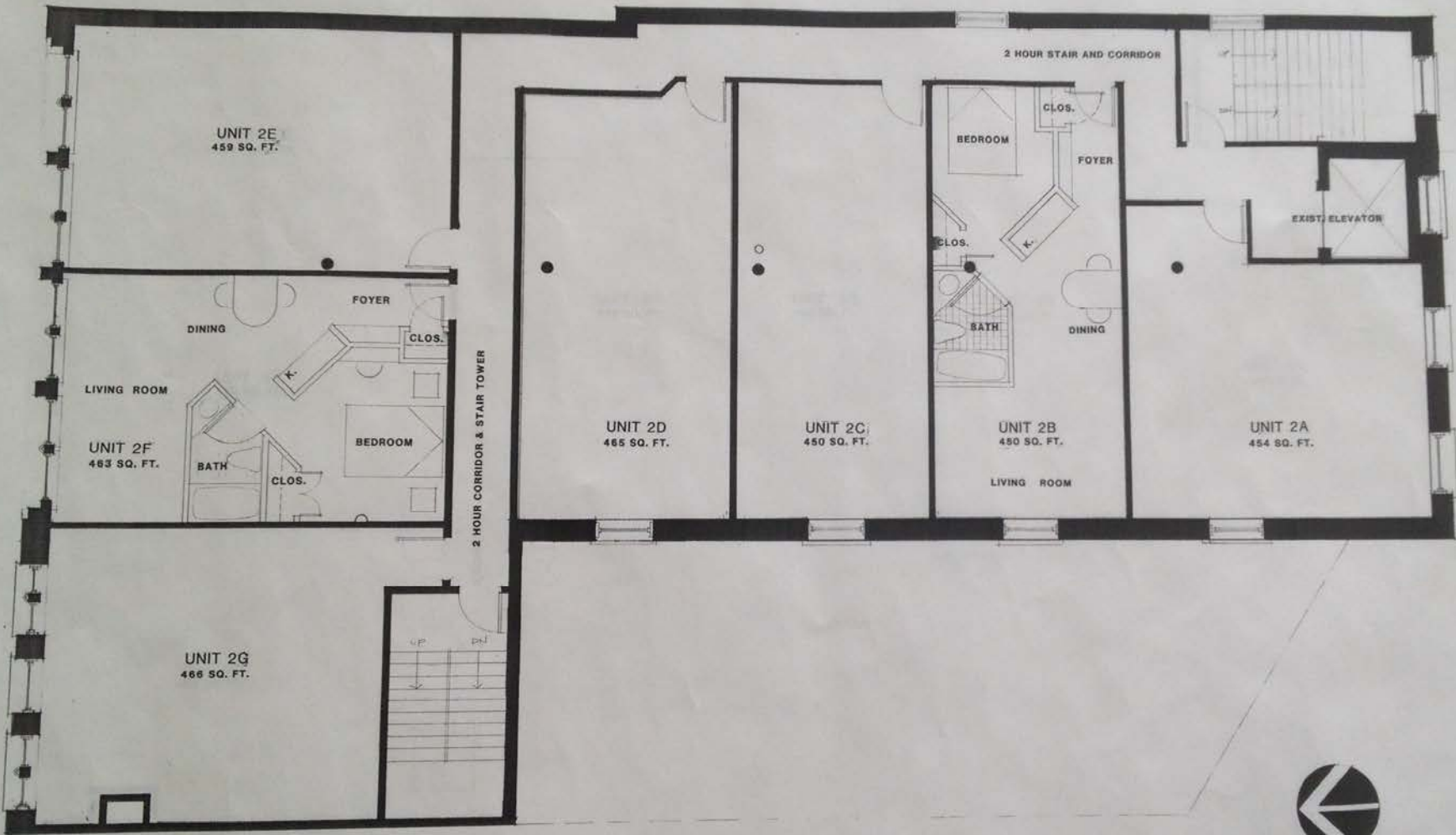


INTERDESIGN
Old Lyme, Connecticut 06371
203 434-8063



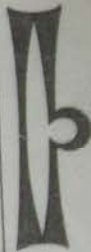
RED AND HUGHES BLDG.
RECORDED DEVELOPMENT FOR CANDLEWOOD DEVELOPMENT CO.
MAN ST., NORWICH

SD



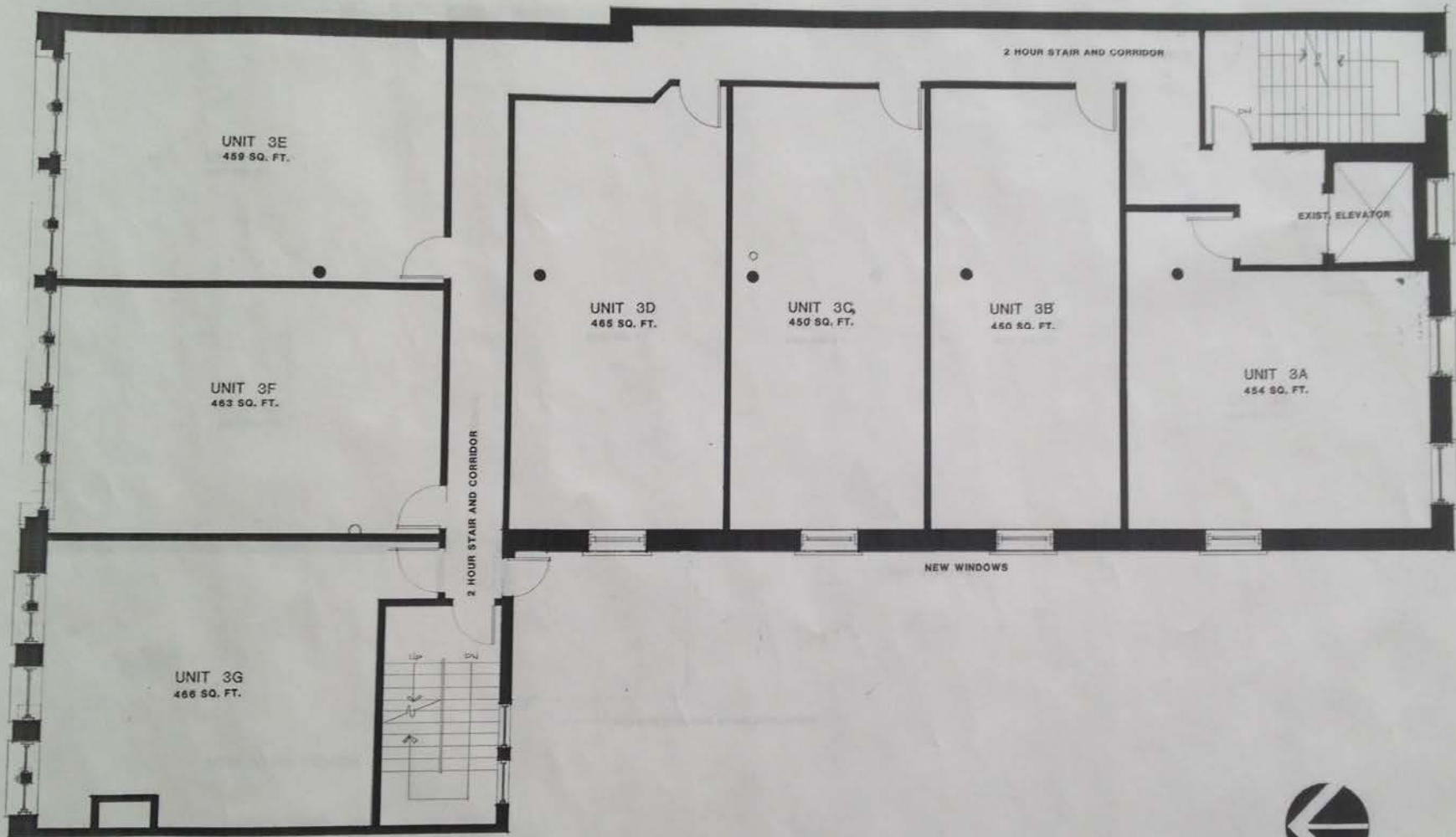
1 PLAN—SECOND FLOOR
SD 4

INTERDESIGN
Old Lyme, Connecticut 06371
203 434-8083



REID AND HUGHES BLDG.
PROPOSED REDEVELOPMENT FOR CANDLEWOOD DEVELOPMENT CO.
MAIN ST., NORWICH
SECOND FLOOR PLAN

DATE: NOV 88
SCALE: 1/8" = 1'-0"
DRAWN: SD 4
CHK: SD 4
SD-4

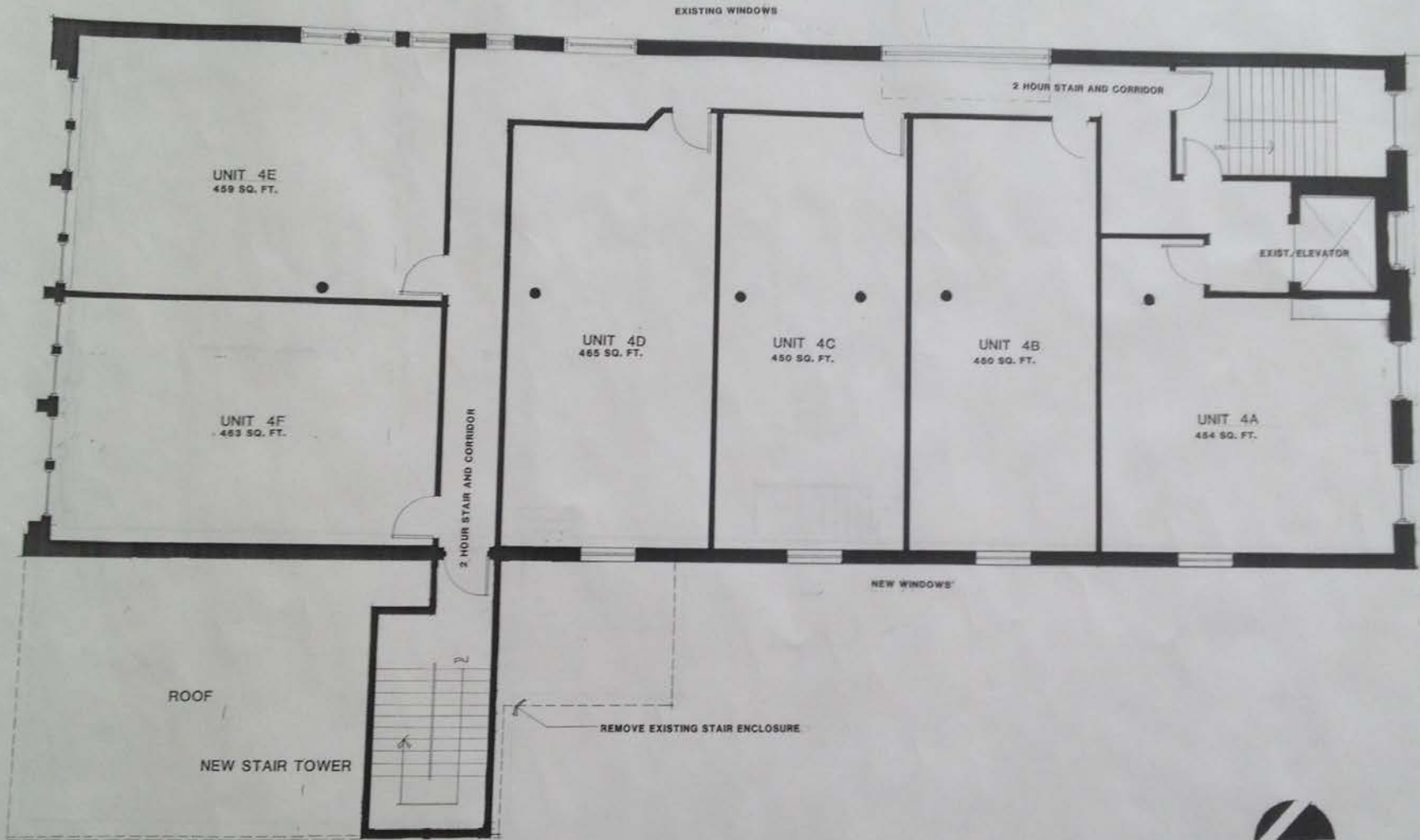


1 PLAN-THIRD FLOOR
SD 5

RED AND HUGHES BLDG.
DESIGN CO. ARCHITECTS FOR CANAL WOOD DEVELOPMENT CO.
MAIN ST., NORWICH
THIRD FLOOR PLAN

DATE	JUN 80
SCALE	1/4" = 1'-0"
DRAWN	JCH/JPY
CHK	SD-5/85
SHEET	SD-5

INTERDESIGN
Old Lyme, Connecticut 06371
203 434-8083



1 PLAN-FOURTH FLOOR
SD-6

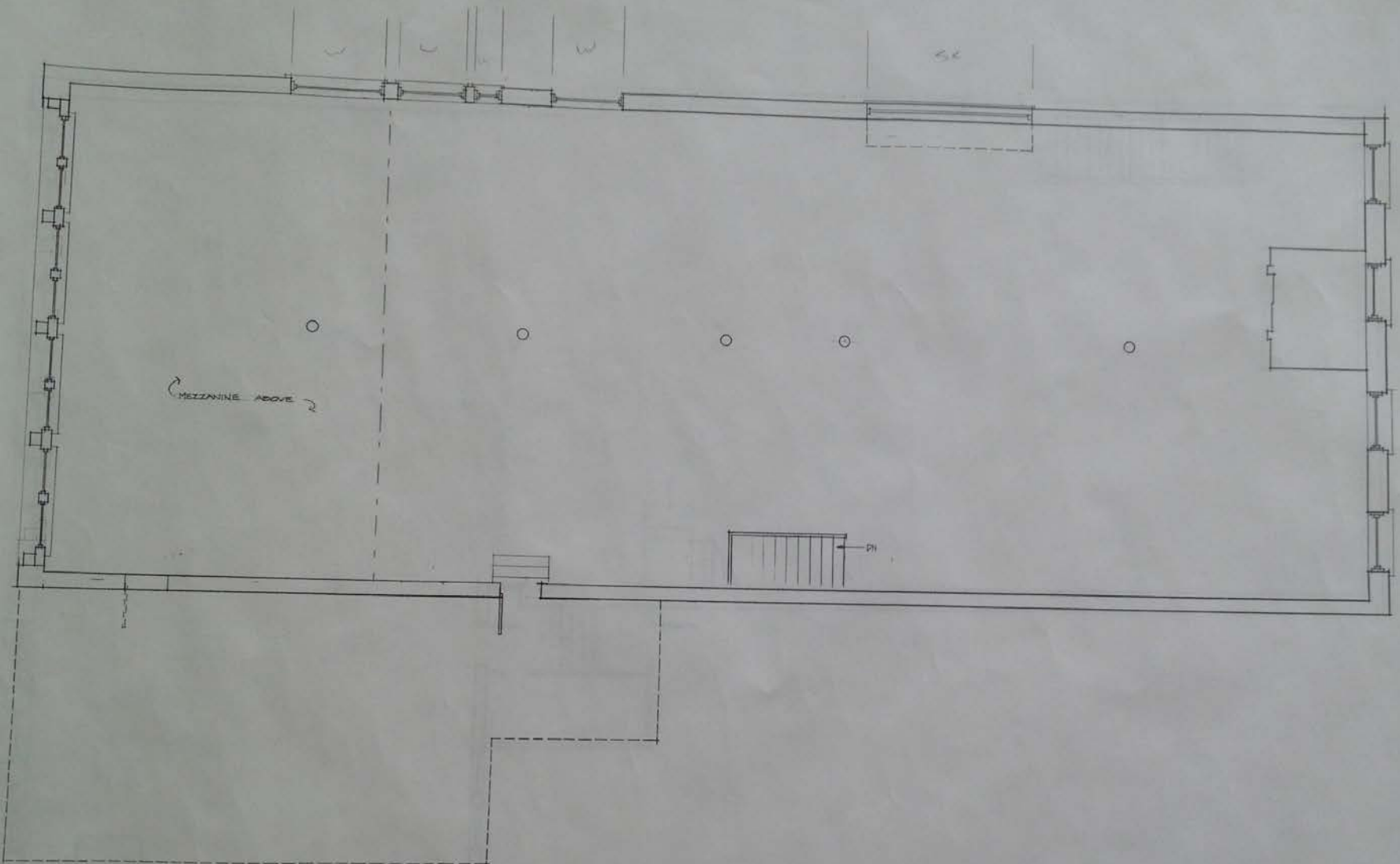



INTERDESIGN
Old Lyme, Connecticut 06371
203 434-8083

REID AND HUGHES BLDG.
PROPOSED REDEVELOPMENT FOR CANDLEWOOD DEVELOPMENT CO.
MAIN ST., NORWICH
FOURTH FLOOR PLAN

DATE	11/27/03
SCALE	1/8" = 1'-0"
DRAWN	SD-6
CHECKED	SD-6
DATE	11/27/03
SCALE	
DRAWN	
CHECKED	

SD-6




PLAN-FOURTH FLOOR
 1/4" = 1'-0"

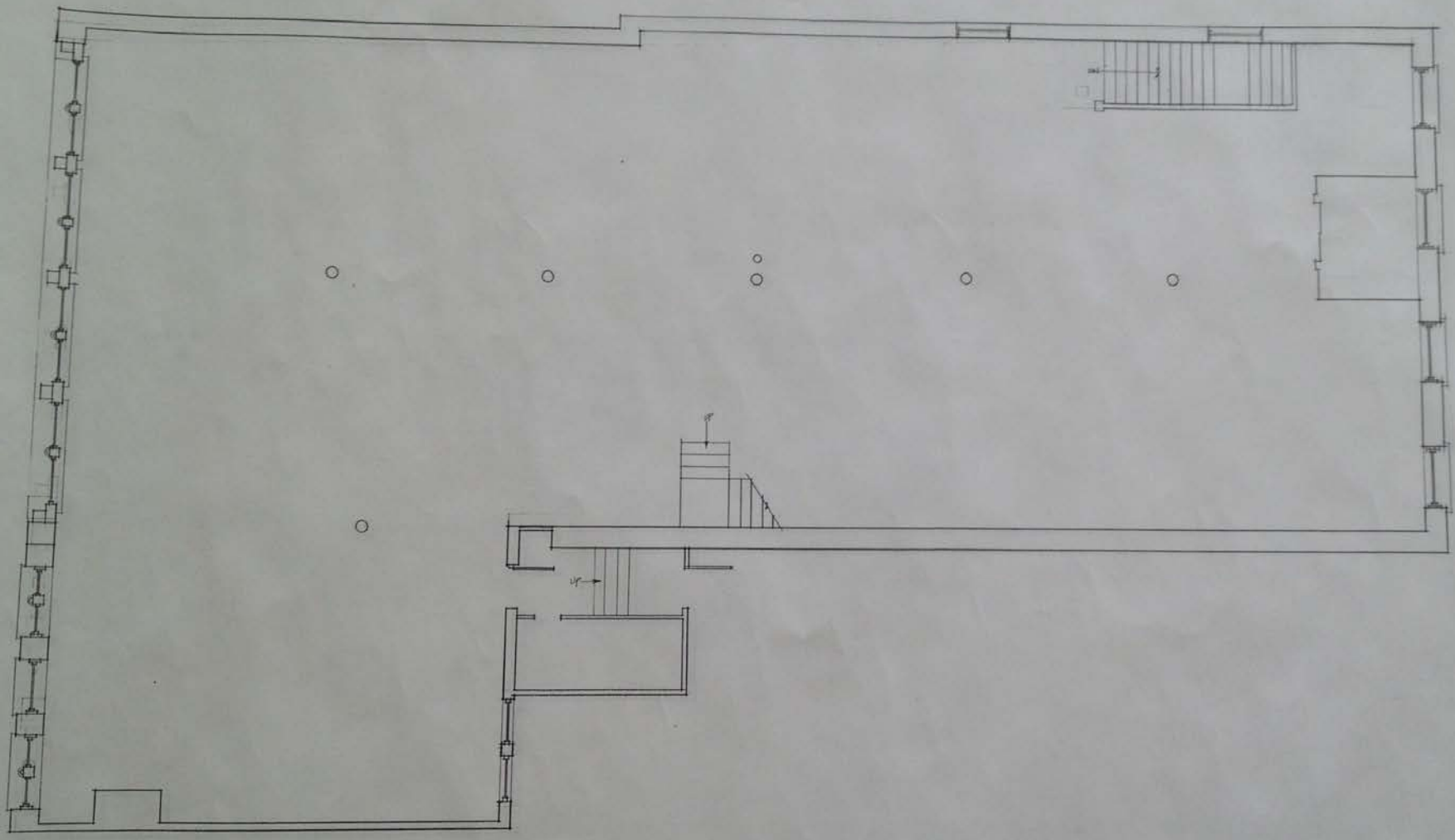
REVISIONS	BY

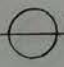
INTERDESIGN
 Old Lyme, Connecticut 06371
 203 434-8083



RED AND HUGHES BLDG.
 MAIN ST., NORWICH
 EXISTING FLOOR PLANS

DATE	7/19/00
SCALE	1/4" = 1'-0"
DRAWN	C.L.
CHECKED	
DATE	




PLAN-THIRD FLOOR
 1/4" = 1'-0"

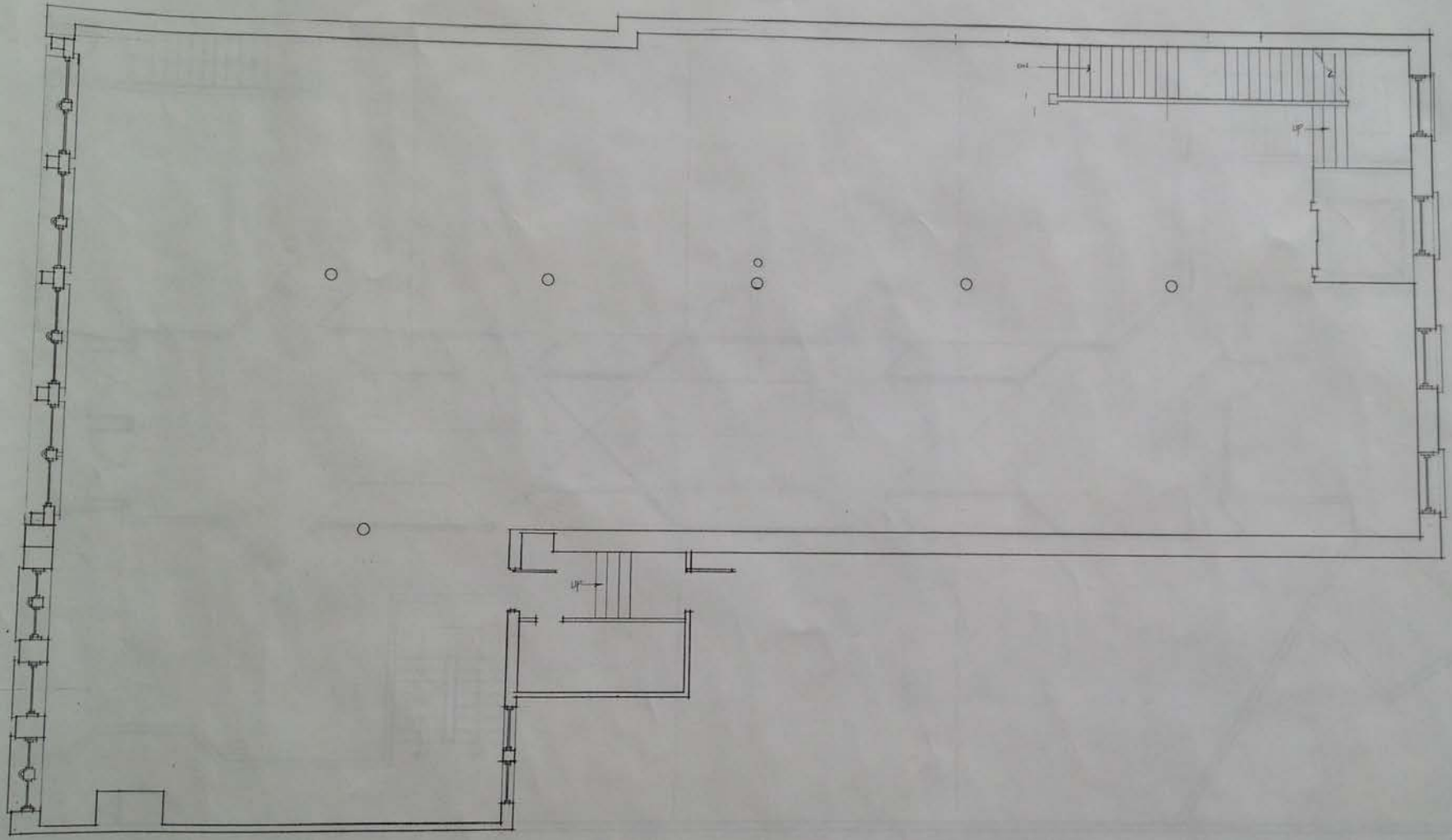
REVISIONS	BY


INTERDESIGN
 Old Lyme, Connecticut 06371
 203 434-8083



REID AND HUGHES BLDG.
 MAIN ST., NORWICH
 EXISTING FLOOR PLANS

DATE	2/12/88
SCALE	1/4" = 1'-0"
DRAWN	SL
CHECKED	
SHEET	




PLAN—SECOND FLOOR
 1/11/00

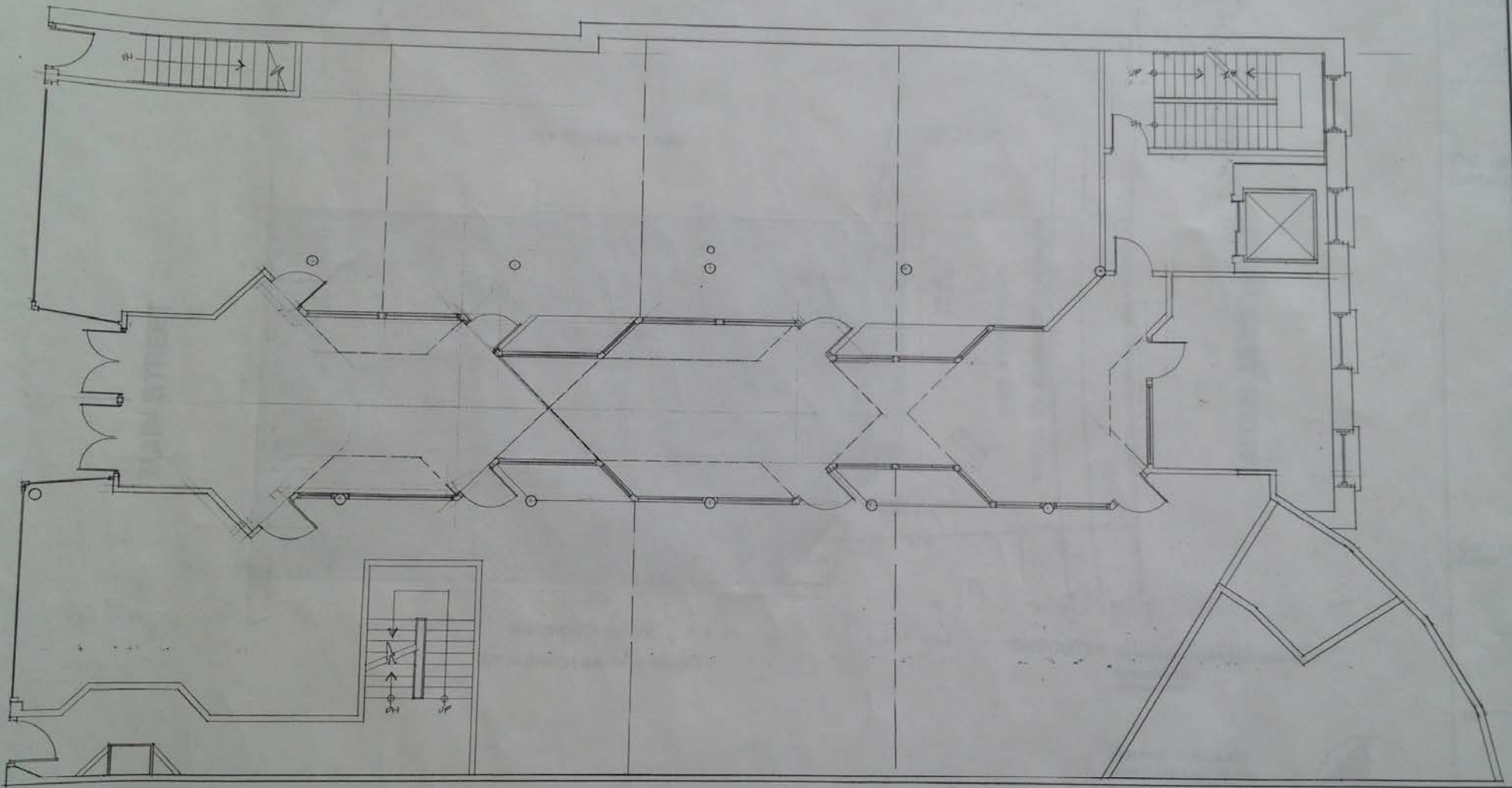
REVISIONS	BY

INTERDESIGN
 Old Lyme, Connecticut 06371
 203 434-8083



REID AND HUGHES BLDG
MAIN ST., NORWICH
EXISTING FLOOR PLANS

DATE	2/11/00
SCALE	1/4" = 1'-0"
DRAWN	SL
JOB	
SHEET	
OF SHEETS	



○ PLAN-FIRST FLOOR

REVISIONS	BY

INTERDESIGN
 Old Lyme, Connecticut 06371
 203 434-8083



REID AND HUGHES BLDG.
 MAIN ST., NORWICH

DATE	
SCALE	
DRAWN	
CHK	
SHEET	



INTERDESIGN
LIMITED

PO BOX 290
OLD LYME, CT 06371
203 434 8063 FAX 434 3419

THE AMICI GROUP
CANTERBURY, CT.

199 - 201 MAIN STREET
NORWICH, CONNECTICUT

SEAL

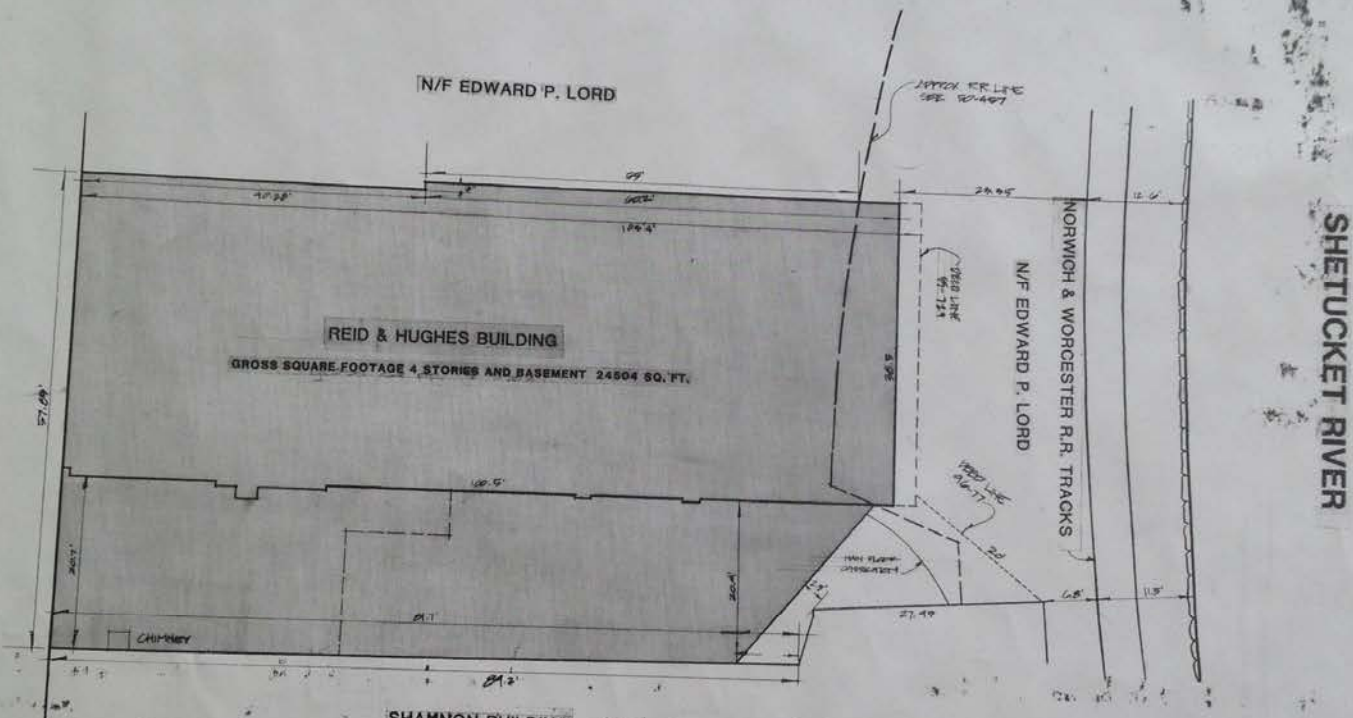
TITLE

SITE PLAN

DATE JAN. 1995 SHEET
JOB
SCALE
DRAWN
CHECKED

A-1

MAIN STREET



N/F EDWARD P. LORD

REID & HUGHES BUILDING

GROSS SQUARE FOOTAGE 4 STORIES AND BASEMENT 24504 SQ. FT.

NORWICH & WORCESTER R.R. TRACKS
N/F EDWARD P. LORD

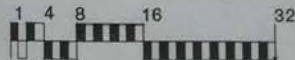
SHETUCKET RIVER

SHANNON BUILDING

N/F NORWICH SAVINGS SOCIETY

CODE DATA
3B NONCOMBUSTABLE/COMBUSTABLE
UNPROTECTED
SPRINKLERED

BASEMENT 5707 SQ. FT.
FIRST FLOOR 5787 SQ. FT.
SECOND FLOOR 4551 SQ. FT.
THIRD FLOOR 4551 SQ. FT.
FOURTH FLOOR 3968 SQ. FT.
TOTAL: 24504 SQ. FT.



Hydrant to outside

2nd Flr landing
+ 20 R @ 7"
(15'-4")

13 R

stair to
Flrs 3-4
up 20 R @ 7"
(11'-7")

stair enclosure

13 R

demising wall

gallena

Retail

Building Wall
(thickness?)

Retail

width

