

Norwich Connecticut

Ready for Rail, Ready for Business, Ready for Growth

This past June, the City of Norwich opened the first phase of its Intermodal Transportation Center (ITC). This \$22 million investment improved the linkages among several modes of transportation (e.g., automobile, bicycle, bus, pedestrian, water) and is poised to become a regional asset as transportation needs change. This facility is an important hub, providing parking for 167 cars, and connecting area residents to five bus routes. The ITC is also poised for its next phase of development: the integration of passenger rail into eastern Connecticut.



Norwich is a community of opportunity. From the initial settlement in Norwichtown, Norwich has been a place where businesses have prospered and the city is a committed partner. Norwich is also committed to revitalizing its Downtown and has allocated over \$3 million for small business investment here. The city is targeting 1,000 new residents for downtown and 500,000 square feet of new manufacturing space in the business park. There is room to grow.

Norwich is also a great place to visit. There are many historic, scenic and cultural attractions to visit and explore.

Norwich is preparing to be a city of the future. Cities of the future need to reduce their need for energy, and be environmentally responsible. Norwich is committed to these ideals. Norwich Public Utilities, a city-owned utility provider, has invested in renewable energy resources, developing a municipal fleet of compressed natural gas (CNG) vehicles and currently has the only operating CNG refueling facility in eastern Connecticut. Rail service is important component in reducing transportation energy costs in an environmentally-sensitive manner.



FOR MORE INFORMATION

Alan Bergren
City Manager
860.823.3750

Peter Nystrom
Mayor
860.823.3742

Norwich City Hall
100 Broadway

Robert Mills
860.887.6964

Norwich Community Development Corporation
77 Main Street

NORWICH, CONNECTICUT 06360

Norwich Connecticut

Business Opportunities in Norwich

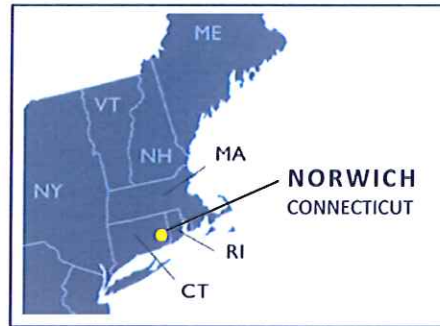
450-acre Business Park

World-class businesses, and institutions, including:

- US Foods
- Freeport-McMoRan
- Norwich Free Academy
- People United Bank
- Chelsea Groton Bank
- Three Rivers Community College

Great Places in Norwich

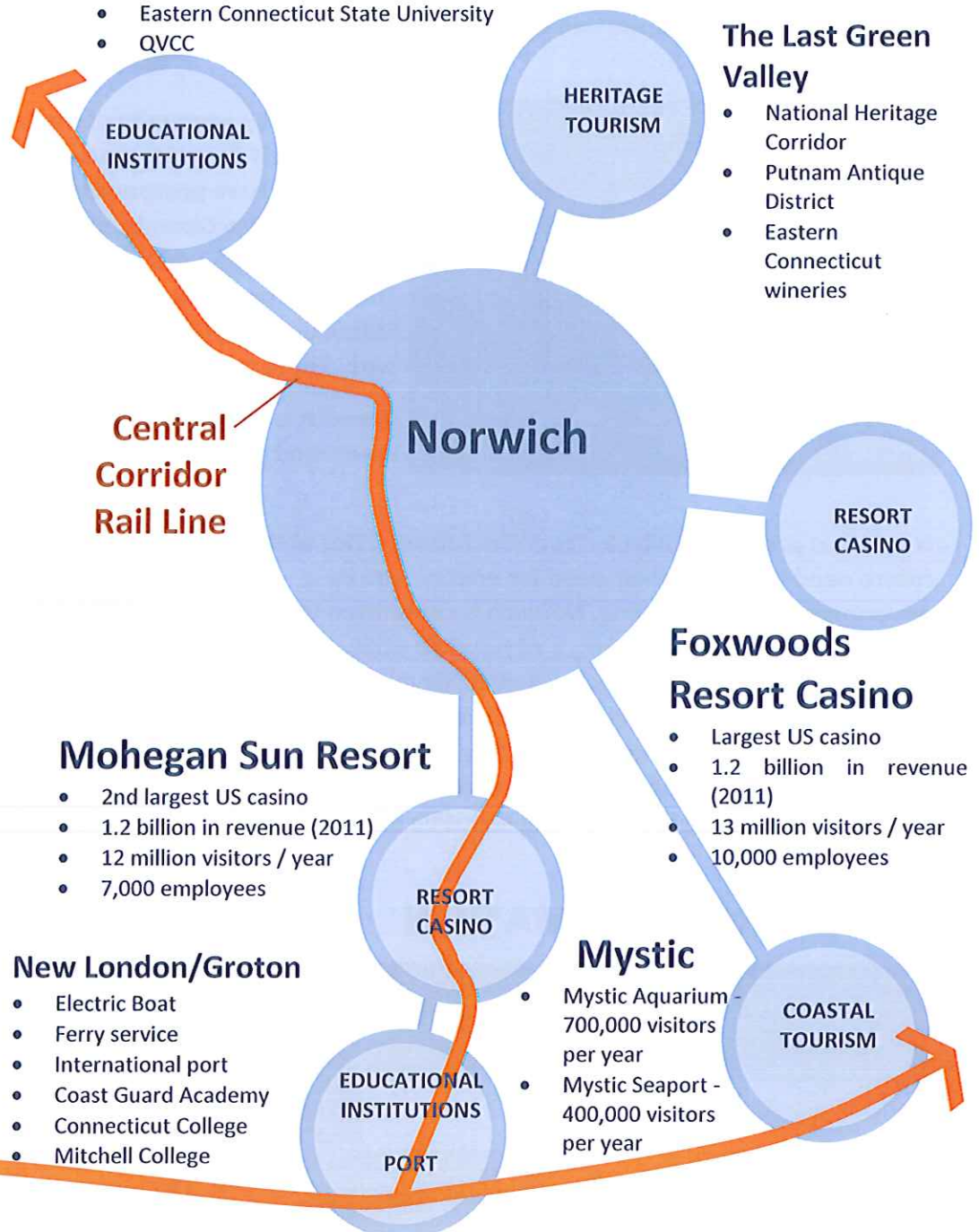
- Dodd Stadium
- Meeting House Rocks
- Norwichtown Green
- Gov. Samuel Huntington House
- Old Burying Ground
- Leffingwell House Museum
- Uncas Leap at Yantic Falls
- Slater Memorial Museum
- Converse Art Gallery
- Chelsea Parade
- DAR Museum
- Rose Garden
- Mohegan Park
- Royal Mohegan Burial Ground
- Heritage Walkway
- City Hall
- Marina at American Wharf
- Howard T. Brown Park
- Norwich Municipal Golf Course and Ice Rink
- Ponemah Mills
- Spirit of Broadway Theater
- Norwich Arts Center



the Center
of eastern
Connecticut

Willimantic Connecticut

- University of Connecticut (Storrs)
- Eastern Connecticut State University
- QVCC



The Last Green Valley

- National Heritage Corridor
- Putnam Antique District
- Eastern Connecticut wineries

Mohegan Sun Resort

- 2nd largest US casino
- 1.2 billion in revenue (2011)
- 12 million visitors / year
- 7,000 employees

Foxwoods Resort Casino

- Largest US casino
- 1.2 billion in revenue (2011)
- 13 million visitors / year
- 10,000 employees

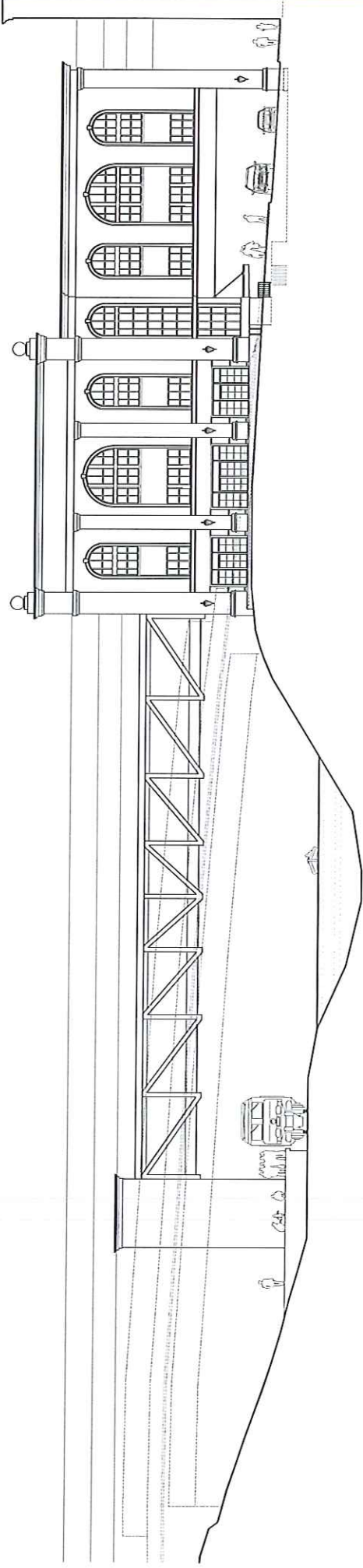
New London/Groton

- Electric Boat
- Ferry service
- International port
- Coast Guard Academy
- Connecticut College
- Mitchell College

Mystic

- Mystic Aquarium - 700,000 visitors per year
- Mystic Seaport - 400,000 visitors per year

Norwich Intermodal Transportation Center




Phase I – Completed June 2012

- 169 Car Parking Garage
- Regional SEAT Transit Center
- Ticket Office/Waiting Room
- Supporting Retail Space

Phase II – Concept

- Connect Pedestrian Bridge Over the Yantic River to the Central New England Railroad



Changing business needs?

It's in our
nature to help

We offer support by:

- ▶ Finding the information you need to locate or grow here
- ▶ Navigating the governmental and permitting processes
- ▶ Matching you up with available resources and incentives



77 MAIN STREET, NORWICH, CT 06360
PHONE ▶ 860.887.6964 FAX ▶ 860.887.3438

▶ askncdc.com

RETENTION • ATTRACTION • EXPANSION • DEVELOPMENT